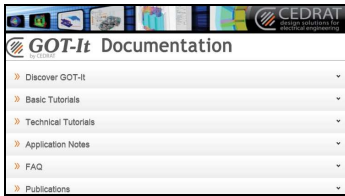


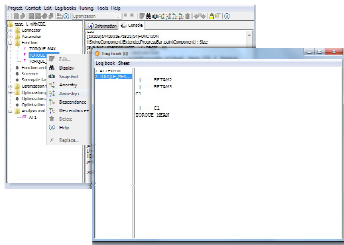

GOT-It 3.0 New features

■ Get in started easily with the new User help



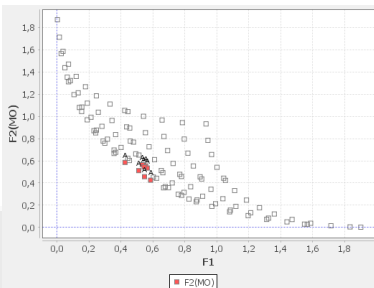
- Browse easily within a new **friendly interface**.
- Find out all kind of **tutorials**, learn faster about the **software functionalities**.
- Discover **short & accurate examples** showcasing the **software's performance & capabilities** (Optimization application notes).
- **FAQs** answering your **specific questions** are **reachable with no effort**.
- **Open directly the solved projects** thanks to drag and drop capability.

■ Let you guide in your work



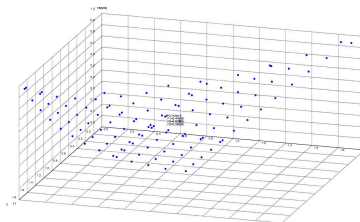
- Be informed in **real time** of the **software running** with the new **progress indicator**.
- Don't feel lost when you see an empty field: **tooltip messages** will **guide you** of the procedure to follow.
- **Manage your projects in 2 clicks**: from menu Project click on Explore directory and have a **global view on your working folder**.
- Right click on your entity of interest and get **schematic information** about all the **ancestry and dependence connections**.

■ Be more flexible in your results analysis



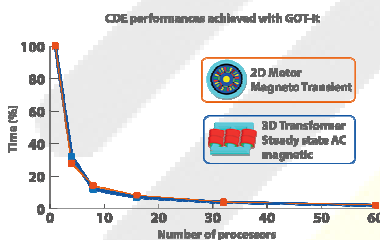
- **Supervise the optimization process in real time** by visualizing the results and **gain time** in your analysis.
- Go beyond of **Pareto frontier** with 2 objectives. Now you are allowed to display the **Pareto frontier in 3D** and find out the **compromise solutions**.
- Understand and select easier the **best solution** in the case of **multi-objective optimizations** using the display of sub domains superimposed to the Pareto frontier.
- Take advantage of various export formats for your result analysis: txt, png, html

■ Optimize more efficiently



- Be confident to **find the realistic optimum solution** by taking into account **tolerances and the worst case deviation**.
- Take benefit of **improved GMGA algorithm** for your **multi-objective optimizations**.
- **Define easier** your **discrete parameters** using the definition by file.
- Be able to **import curves** thank to the **tabulator reader connector**.

■ Enjoy the distributed computing (CDE)



- Let you help in the **installation process** with a new **software wizard**.
- **Stay informed** of the platform state thank to **contextual information panel**.
- Be safe of untimely interruptions due to system errors. Now CDE is equipped of a **smart error management** making the tool more robust.
- Be able to check the configurations that have not been solved correctly using the **individual job folders**.
- **Gain time** with the **round robin capability** allowing to **distribute the jobs on a smart way**.