

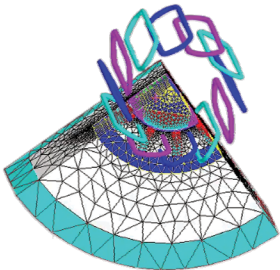


Flux 12.1

New features

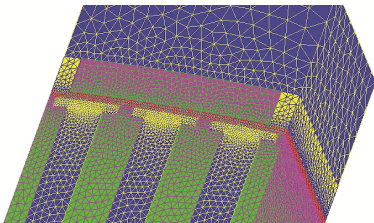
by CEDRAT

Define your 3D model faster



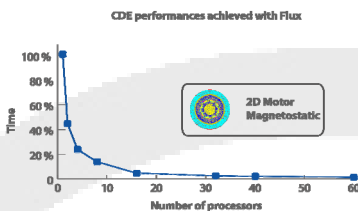
- A more powerful 3D geometric modeler
- New tools to **simplify imported geometries** for more efficient calculations
- **New DXF import** technology for a better communication with CAD tools
- **Templates** to define **3D electric machine models with the windings** in a few clicks!

3D auto-adaptive mesh to get precise results



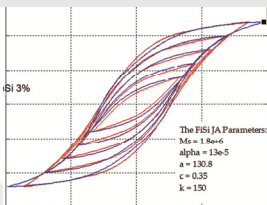
- Auto-adaptation of the mesh during the solving in **3D magnetostatics and electrostatics**
- Mesh **automatically** adapted to get a **trustable representation of the physics**
- The best compromise between number of nodes and accuracy
- Possibility to combine with manual controls for expert users to fine tune the mesh

Accelerate your multi-parametric studies and simulate more configurations



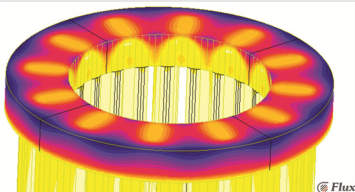
- **Distribution of parametric calculations** directly available in Flux
- Take advantage of all the **computing power available on your PC or cluster**
- Very simple to install and to use for a significant solving time gain

Evaluate the effect of static hysteresis on the performance of your device



- **Static vector hysteresis model** taken into account **during solving**
- Remanent magnetization evaluation and associated force
- Impact of hysteresis on electric circuit values

More precise thermal simulations



- **Radiation between surfaces** taken into account in 2D and 3D
- Available in transient or static. Also applies to magneto-thermal applications
- **Update of the coupled analysis with STAR-CCM+** for a more precise representation of convection